

Stop dirt in its tracks



coral[®] Keeps your building looking good

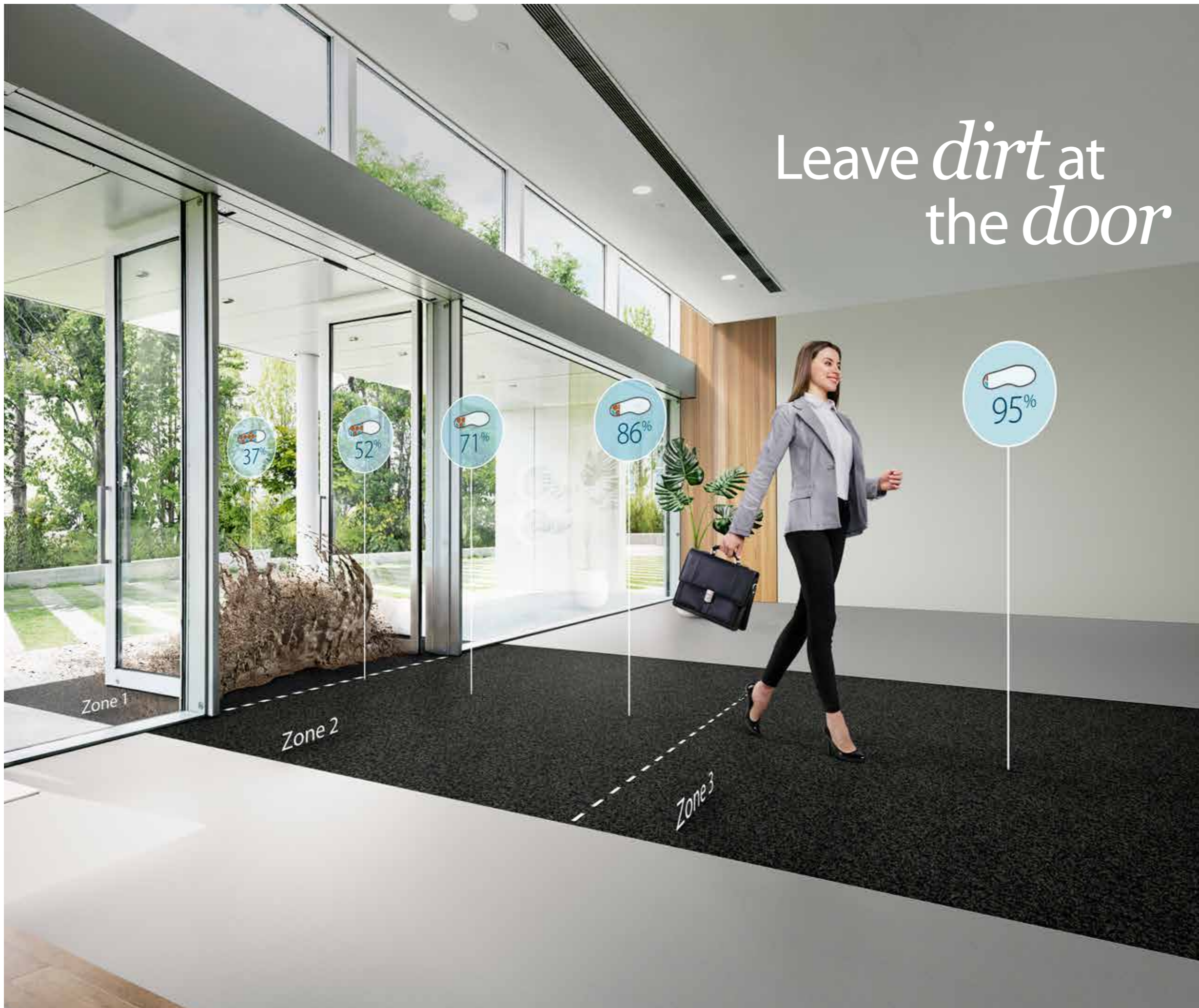
forbo
FLOORING SYSTEMS

Leave *dirt* at the *door*

Coral® entrance flooring systems, making your building look even better

We have been the world leader in textile entrance flooring for over 50 years, so there is nothing we don't know about stopping dirt and moisture coming into your building. First impressions count. When people enter your building they should like what they see. But you also have the practical pressure of keeping your building floors clean and keeping your visitors safe. Our Coral entrance flooring systems do all of this, and more.

Every entrance has its own demand since it depends whether you are in a main street office area or are a primary school. Our Coral collection consists of many different collections each of them with their own focus area like dirt scraping or moisture take up. The icons help you guide through the options. Besides functionality you can also choose different installation options, sheet, tiles, mats. Last but not least the choice for the environment can help you take the final decision. We have several products with regenerated yarns. Whatever collection you choose, you know you have the best quality with the best functionality.





Coral luxe 2910 | onyx

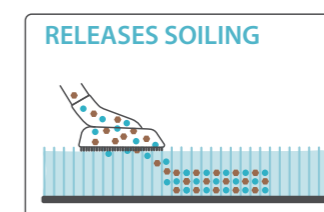
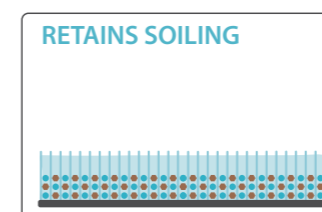
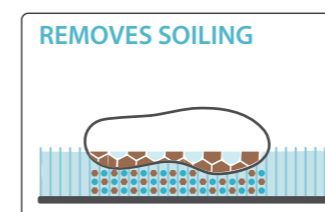
Don't let dirt and *moisture* ruin your building *design*

There is a lot of time and money spent on the visual appearance of a building. Architects and interior designers connect the atmosphere of a building to its users and visitors. It is often forgotten that this design can only be retained when the floor stays clean and undamaged.

A well designed and innovative entrance flooring system will:

- reduce the risk of slip injuries
- prolong the life of the interior floor finish
- reduce the cost of on-going maintenance
- make the entrance look good and inviting
- contribute to an environmentally friendly building due to less use of cleaning detergents for maintenance of the following floor

The Coral collections are designed with our own yarn system that contribute to scraping dirt, wiping off moisture, let the entrance flooring still look clean and stays active after years and years of use. We use the 4R principle for this, Coral;



Choose the *right* entrance system for your *situation*

A functional entrance flooring system is chosen based on the location of the building (determines type of dirt), the amount of footfall (how many people walk over it), the type of people that go over the mat (e.g. business people or school children) and the type of entrance in the building (large, small, inside, outside).

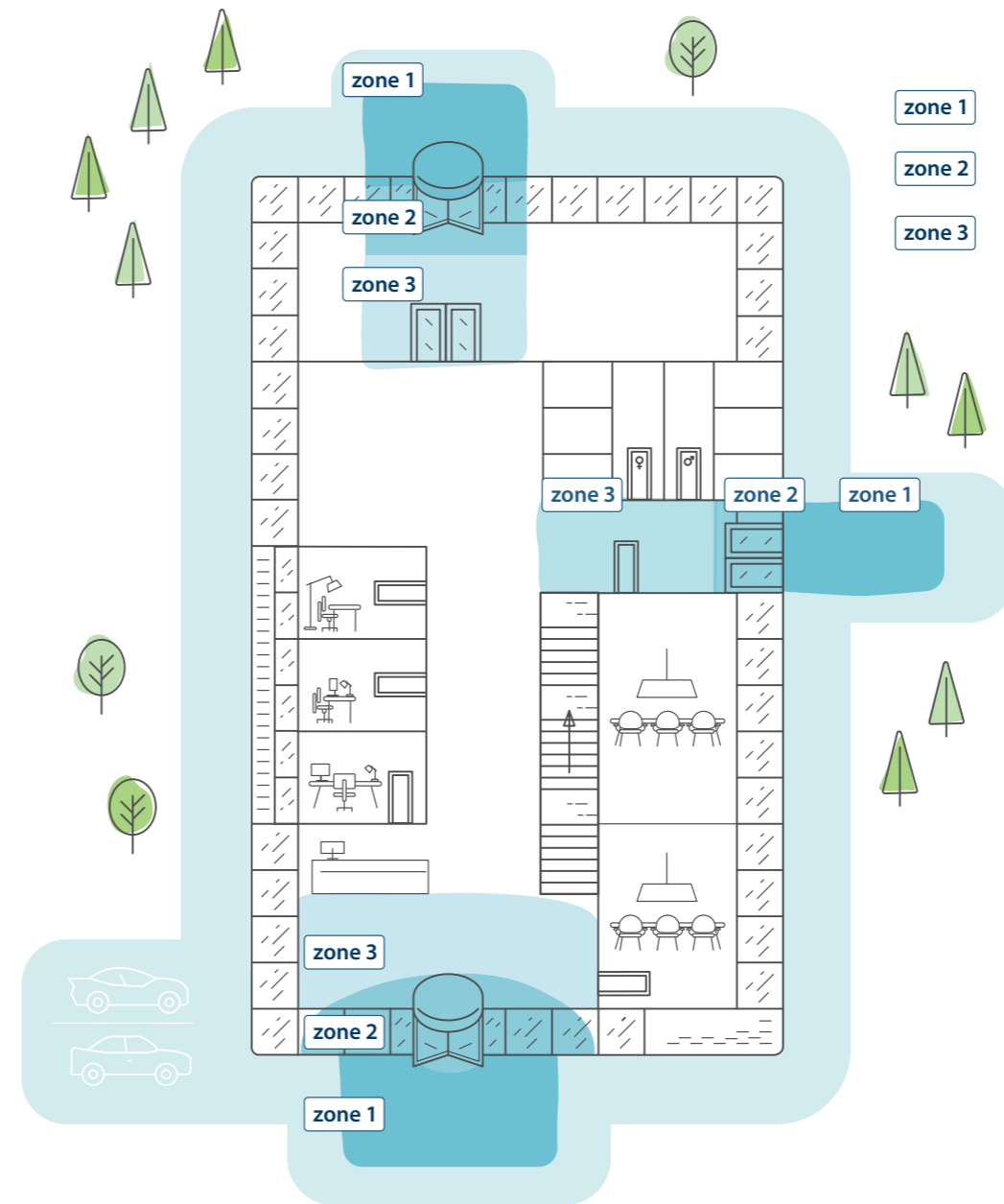
Choose the right product for the right area.

The icons at every collection show the dirt scraping capacity and the moisture uptake. This helps you to make right choice.



Good for the environment. Good for your daily environment.

From how they're made to how they perform, **Forbo** flooring is truly sustainable. With its eco, safety, design and cleaning credentials, **forbo flooring** is good for buildings, good for people and good for the planet. We help people work, live and relax in a better environment.



- zone 1 External Primary matting
- zone 2 Internal Primary matting
- zone 3 Internal secondary matting

3 entrance flooring applications

1. Primary matting

- Outside the building or first area inside the building
- First line of defence
- Use scraping of dirt (Coral grip, Nuway rigid matting or Coral click)

2. Secondary matting

- Ideally 6 meters of mat or in combination with primary or circulation zone matting.
- Inside the building after primary matting
- Use for picking up fine dirt and moisture (Coral classic, Coral brush, Coral welcome, Coral duo, Coral bright, Coral interior, Coral luxe)

3. Circulation zone matting

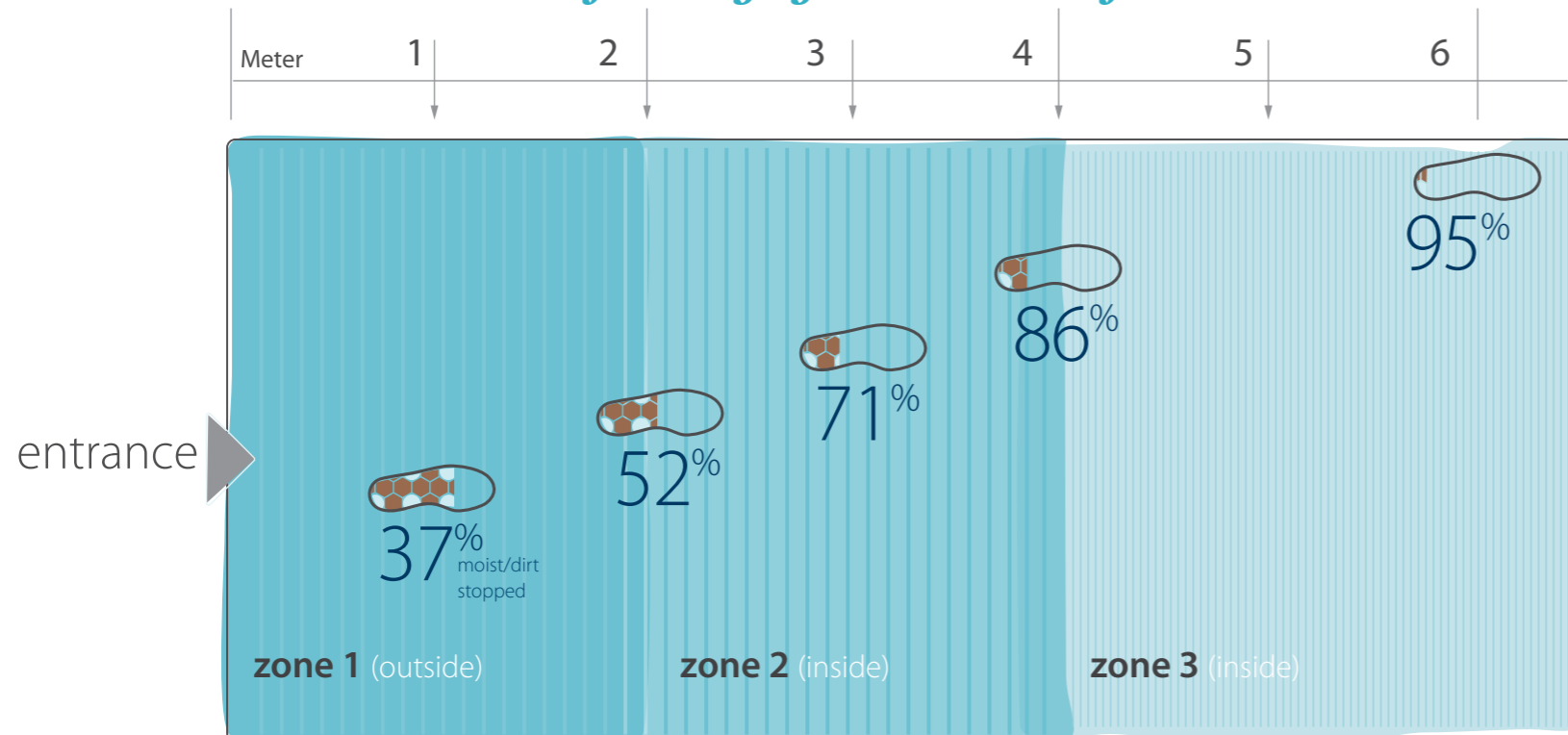
- Inside the building at reception area or in corridors
- Also has scraper yarns and takes up moisture
- Very much required when entrance flooring in zone 1 or 2 is to short or not present (Coral interior, Coral luxe, Coral bright, Coral classic)

Stops up to 95% of dirt and moisture walked into a building

Wipe off feet & wheeled traffic in 6 meters

Coral entrance flooring systems can take up to 95% of all dirt and moisture when placing the ideal entrance flooring system of 6 meter. These 6 meter can already start outside and can go all the way to the reception area. Just a mat behind the door will not do the trick. People will not stop to wipe their feet so while moving the mat should do its work.

An entrance flooring system consist of zones

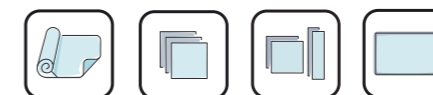


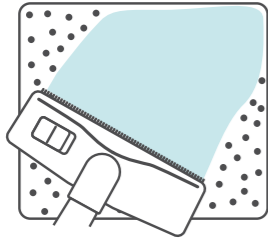
Installation methods and Fast Flooring

The type of installation or delivery form is indicated at the collection. We have either sheet, tiles, tiles/planks and mats. Also this decision should match your requirement.

Fast Flooring installation

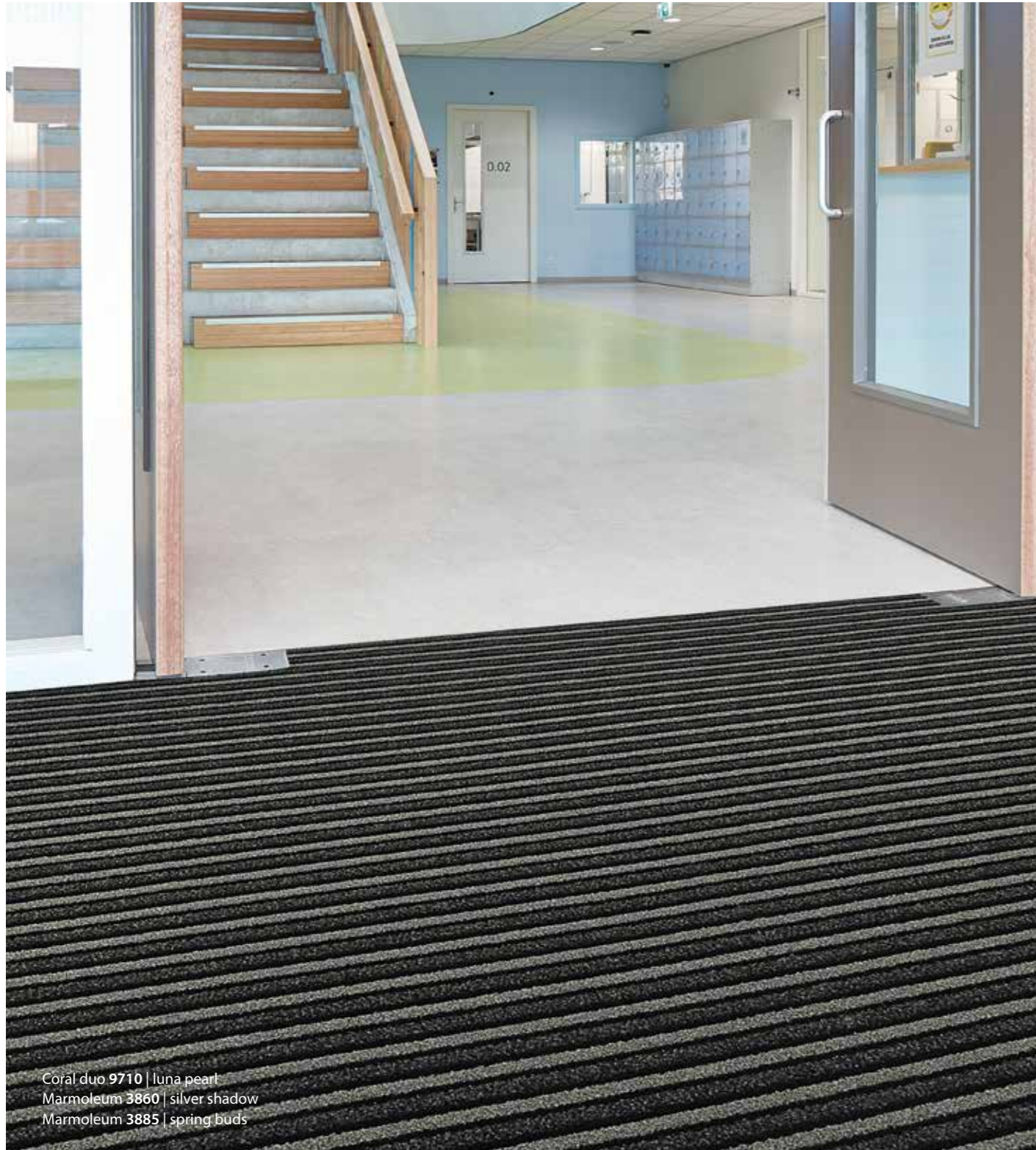
Especially for the Coral classic and brush tiles we have developed a loose lay installation system with help of hook and stick pads between the tiles. In total four colours (Classic and Brush 2 each) are available on stock as loose lay option.





REDUCE YOUR FLOOR CLEANING COSTS BY **65%**

A coral entrance system with a 3-step clean-off zone will cut your future maintenance costs by stopping up to 95% of walked in dirt and moisture from reaching your building floors. This reduces your building's floor cleaning costs by up to 65% and prolongs the life of your floors. The average maintenance cost of commercial floors is 86% of the total life cycle cost.



Coral duo 9710 | luna pearl
Marmoleum 3860 | silver shadow
Marmoleum 3885 | spring buds

Save money with Coral[®] entrance flooring *systems*

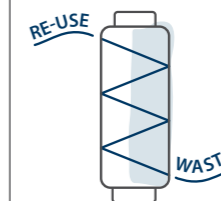
We care about buildings and the environment

- Virtually zero landfill is achieved by the Coral[®] manufacturing plant.
- All the waste yarn from the Coral[®] production is re-used by the yarn supplier.
- Most of our Coral entrance floors use Econyl[®] yarn which is made from used and abandoned fishing nets. Using Econyl[®] is a way to reduce existing waste
- We use energy from renewable sources. This means our Coral production site is part of an effective environmental management system and has achieved ISO 14001 certification.
- Our entrance floor covering can stop up to 95% of dirt from being walked into the building, cutting down on cleaning and maintenance costs and the use of detergents.



MANY CORAL ENTRANCE FLOORING-PRODUCTS USE ECONYL YARN - MADE FROM USED AND ABANDONED FISHING NETS

Using Econyl helps reduce the planet's existing waste, avoids additional manufacturing-related pollution, and keeps the consumption of natural resources and energy to a minimum.



ALL WASTE YARN FROM CORAL PRODUCTION IS RE-USED BY THE YARN SUPPLIER.

Our constant search for new ways to reduce our environmental impact has led us to work very closely with forward-thinking suppliers. They incorporate ever higher levels of recycled content in their materials.

Where *design* meets *environment*

coral® welcome

With its contemporary linear design and rich, deep pile, Coral Welcome packs the style and aesthetic appeal of a luxury carpet. It makes an unequivocal statement in any entrance area. But Coral Welcome is more than just a fabulous looking floor covering – it’s an environmentally advanced one as well. The secret lies in its use of ECONYL® 100% regenerated yarn, which is made from regenerated industrial and postconsumer waste.

In the creation of ECONYL® products our supplier is waste positive, which means the amount of waste removed from the earth is greater than the amount of waste resulting from production. On top of that, the production has a low environmental impact because we limit the consumption of natural resources and energy to a minimum. Taking the environmental aspect even further, the primary backing of Coral Welcome is made from recycled PET bottles.

- Made with ECONYL® 100% regenerated yarns
- Primary backing made from recycled PET bottles
- Produced with phthalate free technology
- Keeps out moisture and dirt
- Complies with the highest fire class standard: Bfl-s1
- Suitable for the toughest commercial use
- Ideal for inside entrance and circulation areas



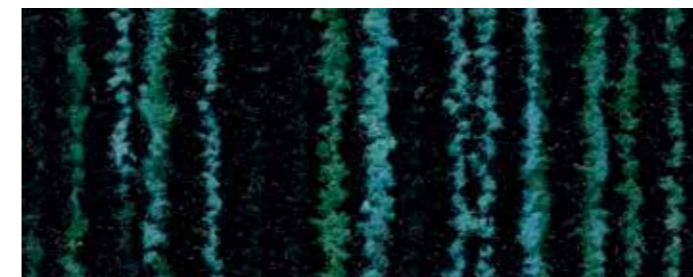
3201 | silver shadow

LRV 3%



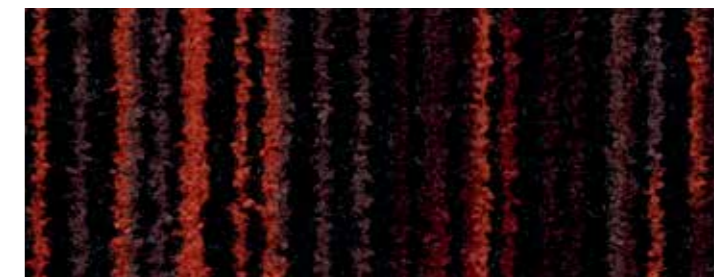
3202 | desperado

LRV 2%



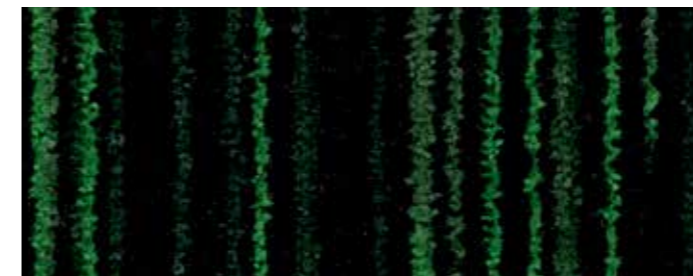
3205 | blue lagoon

LRV 3%



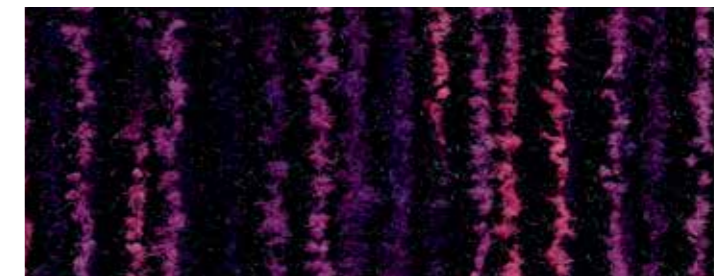
3206 | volcano

LRV 1%



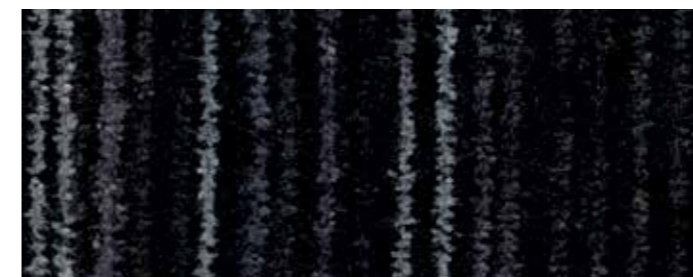
3208 | matrix

LRV 2%



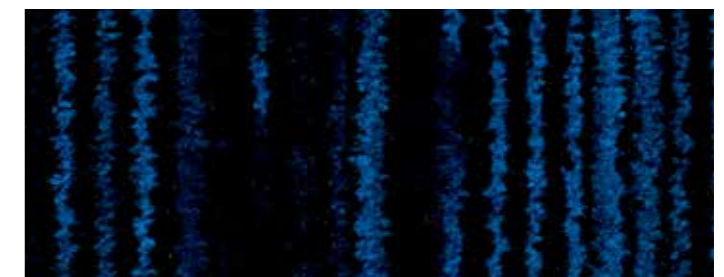
3219 | colour purple

LRV 1%



3210 | black magic

LRV 2%



3207 | blue velvet

LRV 1%

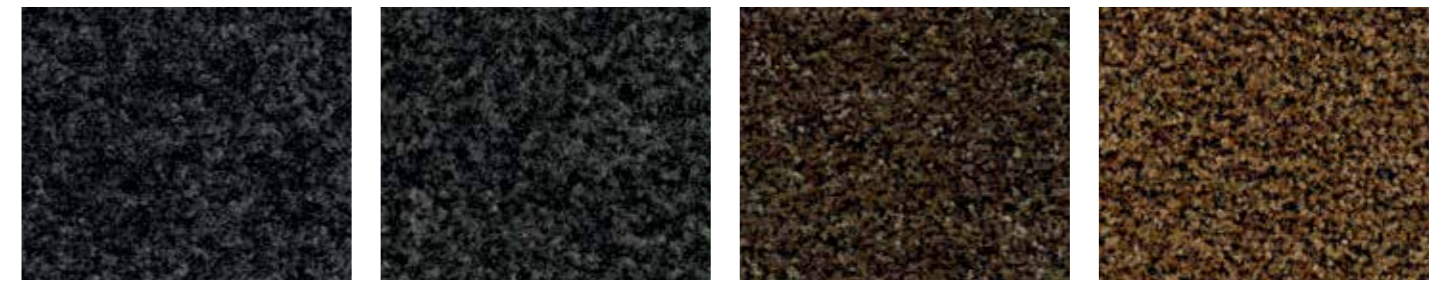
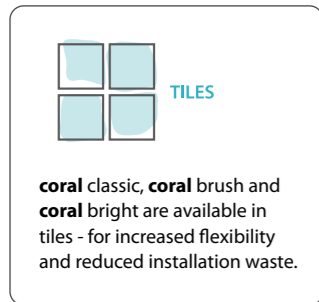
A strong and *solid* performer that fits in *anywhere*

coral® brush

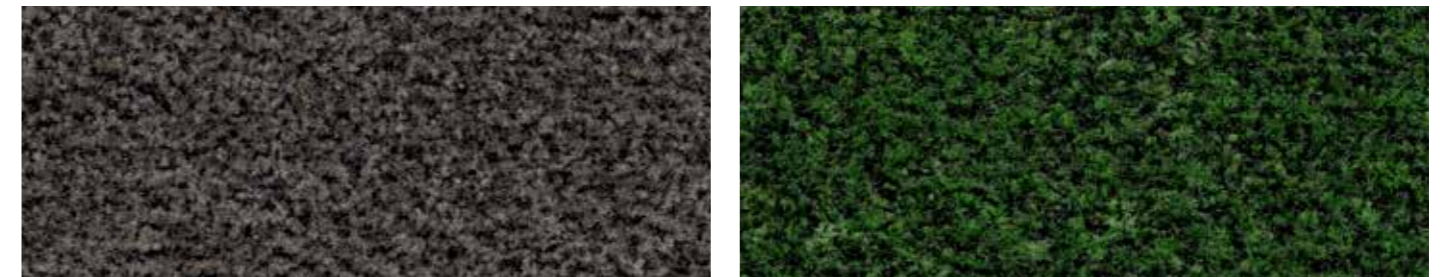
Coral Brush is suitable for all types of entrance areas, absorbing moisture and removing dry soiling as the weather demands. This collection works well with any interior design, serving as eye-catcher or self-effacing support for the rest of the floor design. Coral Brush is made of three yarns: capillary yarns to absorb moisture, active dirt-scraping yarns and heavy duty texture yarns that can withstand the heaviest pounding. The space between the yarns serves to hide dirt, which ensures a clean appearance for longer.

The Coral Brush range is also available in tile format for increased flexibility.

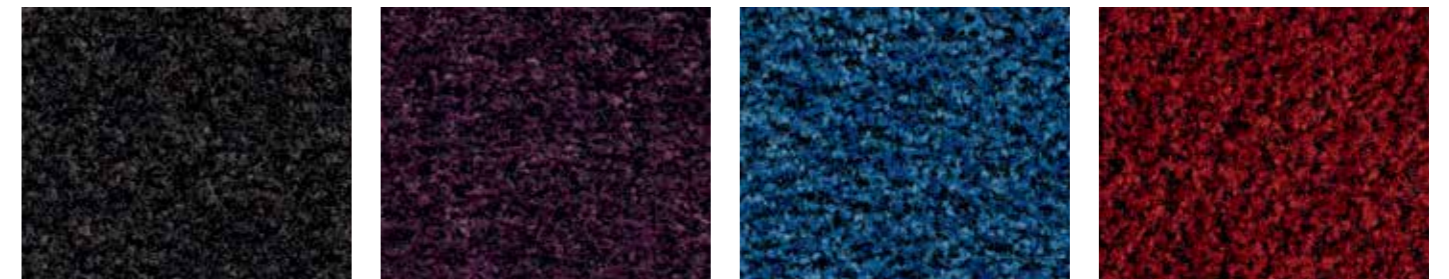
- Good all-rounder that keeps out moisture and dirt
- Made with ECONYL® 100%-regenerated yarns
- Appealing colours complement every floor
- Complies with the highest fire class standard: Bfl-s1
- Suitable for the toughest commercial use
- Ideal for inside entrance and circulation areas
- Produced with phthalate free technology



5710 | asphalt grey* LRV 2% 5721 | hurricane grey* LRV 3% 5774 | biscotti brown LRV 4% 5716 | masala brown LRV 5%



5714 | shark grey LRV 4% 5708 | avocado green LRV 3%



5715 | charcoal grey LRV 2% 5739 | Byzantine purple LRV 2% 5722 | cornflower blue LRV 3% 5723 | cardinal red LRV 2%



5730 | vulcan black LRV 1% 5727 | sratos blue LRV 1% 5724 | chocolate brown LRV 3% 5736 | cinnamon brown LRV 3%

*Available as Fast Flooring installation

The best protection against dirt and moisture for every *space*

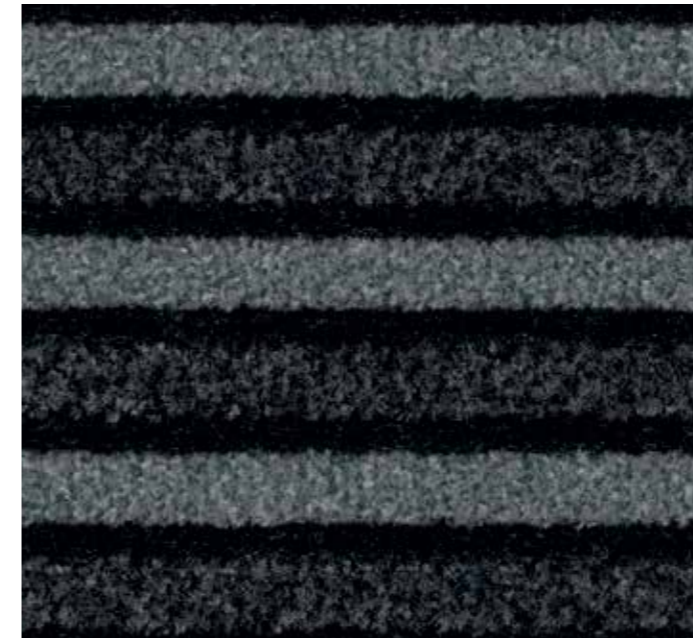
coral® duo

A short entrance zone and still keeping your floorcovering clean don't go together, do they? Well, yes, they can. Coral Duo is the go-to solution when you need maximum dirt removal, unrivalled dirt retention and exceptional moisture absorption all in the short distance of just a couple of paces. Research has shown that Coral Duo retains 10% more dirt in the first few metres than any other textile entrance flooring solution on the market. Which makes it the best choice for smaller entrances. Featuring a ribbed construction, Coral Duo is not only functional, it also provides an aesthetically pleasing aspect to any entrance area and is easy to combine with our Coral Brush and Classic collections in larger entrance spaces.

- Excellent solution for every entrance
- Made for 75% with ECONYL® 100% regenerated yarns
- Produced with phthalate free technology
- Unbeatable performance on both moisture and dirt
- Complies with the highest fire class standard: Bfl-s1
- Suitable for the toughest commercial use
- Ideal for inside entrances with limited entrance floor space



9710 | luna pearl



9710 | luna pearl

LRV 4%



9714 | Sicilian sand

LRV 4%



9730 | black diamond

LRV 1%



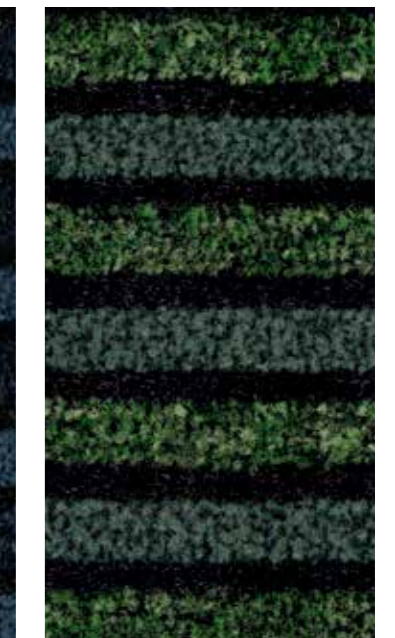
9721 | dark steel

LRV 2%



9747 | azul imperial

LRV 1%



9708 | green bellagio

LRV 2%

The ultimate moisture absorber

coral® classic

Research shows that taking just two steps on Coral Classic's moisture absorbing yarns is enough to absorb half of the foot-borne moisture that would otherwise be carried inside on the soles of people's shoes. A few steps more and your feet are as dry as possible. This

has clear benefits. First, the floor coverings further inside stay cleaner, longer. Second, resilient floors like vinyl, linoleum, wood and concrete are less likely to become slippery and dangerous. Independent tests have shown that Coral Classic will maintain its performance – and appearance – for years to come thanks to the use of solution dyed yarns that guarantee its appearance throughout its lifespan.



IN JUST TWO FOOTSTEPS, CORAL CLASSIC ABSORBS UP TO HALF THE WATER THAT WOULD OTHERWISE BE CARRIED INSIDE.

A few steps more, and your footwear is almost dry. This means the interior floor stays cleaner for longer. And resilient interior floors like vinyl, linoleum, wood and concrete are less likely to become slippery and dangerous.

The Coral Classic range is also available in tile format for increased flexibility.

- Maximum moisture absorption and scrapes off dirt
- Choice of attractive contemporary colours
- Maximum colour fastness
- Complies with the highest fire class standard: Bfl-s1
- Suitable for the heaviest commercial and light industrial use
- Ideal for inside entrance and circulation areas
- Produced with phthalate free technology



TILES

coral classic, coral brush and coral bright are available in tiles - for increased flexibility and reduced installation waste.



4721 | mouse grey



4751 | silver grey

LRV 9%



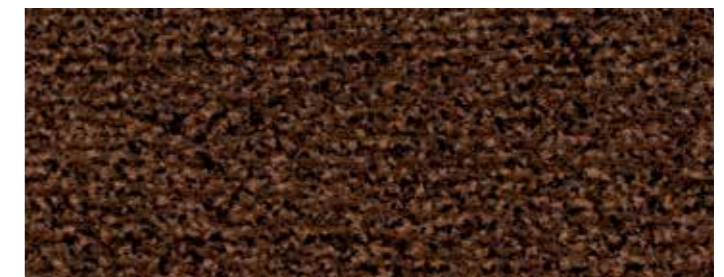
4764 | taupe

LRV 6%



4721 | mouse grey

LRV 4%



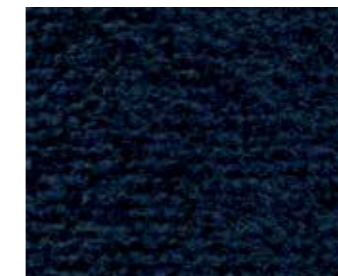
4726 | auburn

LRV 4%



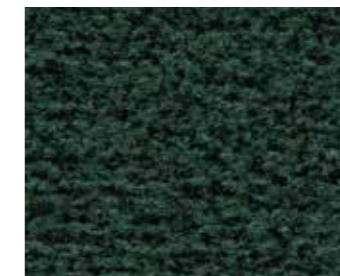
4701 | anthracite*

LRV 6%



4737 | Prussian blue

LRV 2%



4768 | hunter green

LRV 4%



4763 | ruby red

LRV 6%



4750 | warm black

LRV 4%



4730 | raven black*

LRV 2%



4756 | bronzetone

LRV 2%



4784 | coffee

LRV 3%

*Available as Fast Flooring installation

Modularity in optima forma

coral[®] interior

The Coral interior is a unique concept that completes your entrance flooring system. A product that is designed to be installed in zone 3 being the area behind the entrance like lounges, corridors and elevator spaces. The colours of the Coral interior range link with the other Coral ranges so you can follow up on what is in and around the door. The Coral interior comes in a mix of planks (100x25cm) and tiles (50x50cm). Per box there are 6 tiles and 6 planks. The good thing is that there is no pattern so you can simply lay the tiles and planks randomly to get a nice design. It is extremely easy to install with a minimum of installation waste.



- Mix of planks and tiles for ultimate random effect
- Easy and quick installation (no pattern)
- Unique product for both entrance and circulation zone
- Colour matching with other entrance products
- Suitable for the toughest commercial use



1515 | storm cloud



1517 | ocean spray



1521 | Alpine peak LRV 10% 1520 | desert sand LRV 7% 1525 | prairie dusk LRV 5% 1518 | rainforest LRV 3%

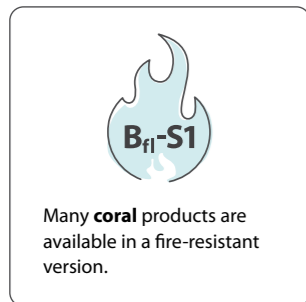


1515 | storm cloud LRV 4% 1517 | ocean spray LRV 2% 1530 | midnight shadow LRV 1% 1513 | savanna sunset LRV 1%

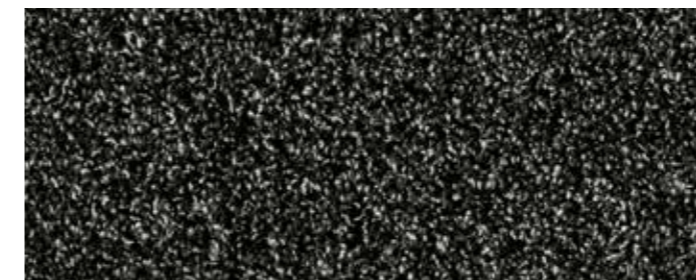
Where *aesthetic* appeal is a *top priority*

coral® luxe

With its luxurious appearance and rich pile height Coral Luxe may not immediately give the impression of a traditional entrance floor, but it is in fact a highly efficient clean-off solution for light to medium traffic areas where aesthetic appeal is a top priority. Coral Luxe is particularly designed to enhance the aesthetic appeal of entrance lobbies, corridors and reception areas. Because of its luxurious look and feel, this deceptive soil and moisture barrier blends particularl well with other carpeted areas of the building. Coral Luxe absorbs moisture from the soles of shoes and conceals dirt within the pile. The yarns used in Coral Luxe are designed for longevity and appearance retention.

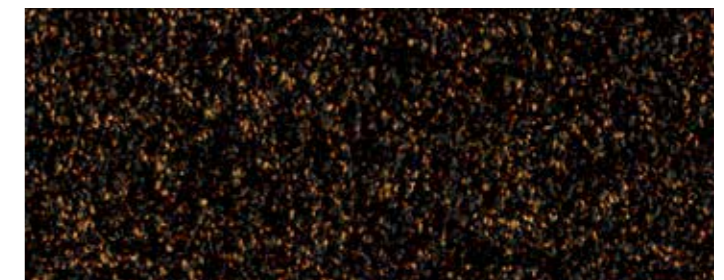


- Comfortable and soft feel
- Offers effective moisture and soil absorption
- Dries quickly for maximum functionality
- Complies with the highest fire class standard: Bfl-s1
- Rich and elegant appearance



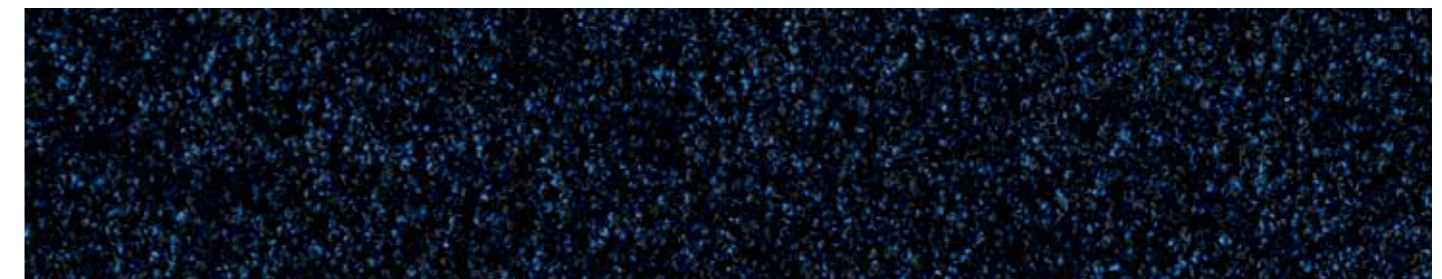
2915 | topaz

LRV 5%



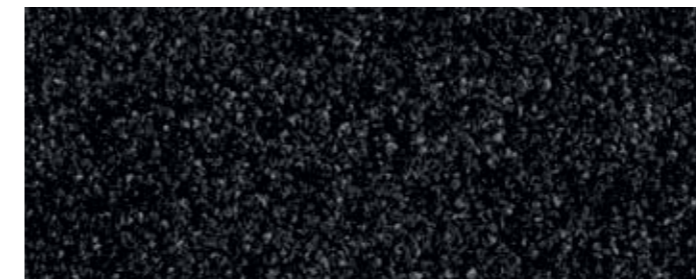
2916 | garnet

LRV 2%



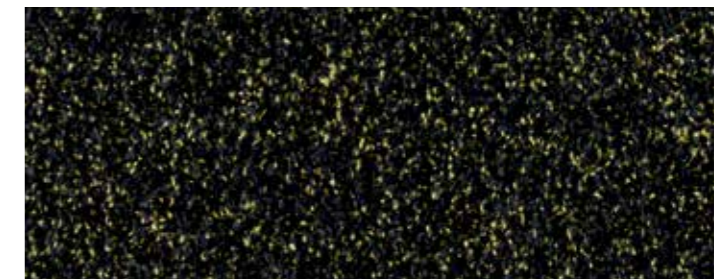
2917 | sapphire

LRV 2%



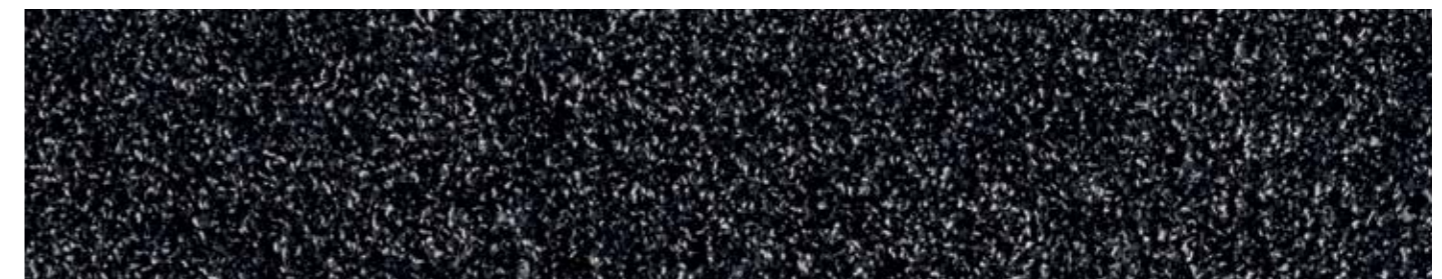
2910 | onyx

LRV 2%



2912 | citrine

LRV 3%



2911 | diamond

LRV3%

When *price* is *key*



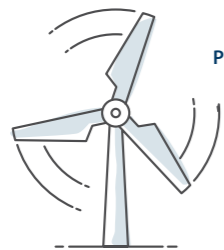
TILES

coral classic, coral brush and coral bright are available in tiles - for increased flexibility and reduced installation waste.

coral[®] bright

When your budget is not unlimited and you still want a good entrance product, we recommend you to choose the Coral bright. The colours certainly are bright and offer some fun in your entrance. Coral bright works best in areas where moisture is the biggest problem and the number of people walking over the mat is low. Then this is a great solution for you.

- Comfortable and soft feel
- Suitable for entrances with low to medium footfall
- Attractive colours
- Also available in tiles



PRODUCED WITH **100%** GREEN ELECTRICITY FROM RENEWABLE RESOURCES

We only use electricity from renewable sources - part of our rigorous environmental management system that has earned us a ISO 14001 certification.



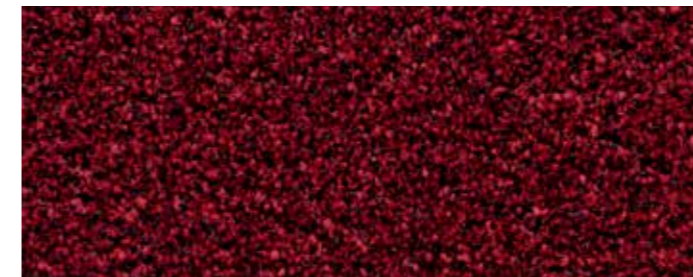
2604 | virgin sand

LRV 10%



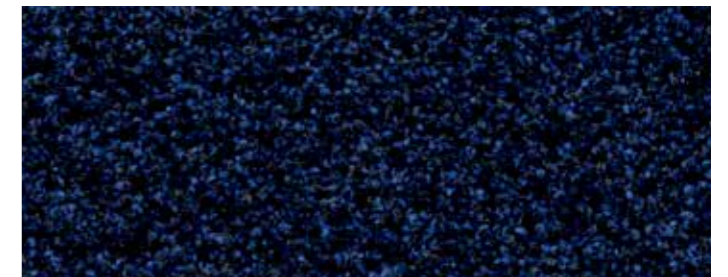
2608 | fresh grass

LRV 11%



2603 | vivid earth

LRV 3%



2607 | deep water

LRV 3%



2610 | cold lava

LRV 2%



2606 | fine peat

LRV 2%

The *robust* and ultimate dirt and grit remover

coral[®] grip

Want to know the secret to keeping your interior clean even when it looks like a hopeless cause? Don't start your entrance floor protection inside, start outside – by scraping off the largest soil particles before your visitors even cross the threshold. Coral Grip is a versatile, nonwoven clean off barrier mat for outdoor and indoor use that comes in medium-duty (MD) and heavy-duty (HD) formats. Coral Grip has an open, non-backed, pervious structure, though it can also be manufactured with an Everfort vinyl backing to make it impervious. And when the going is really tough, there's Coral Grip HD, whose patented embossed design and durable, pliable vinyl filaments ensure a highly effective dirt-scraping action.

- Contains granulates for maximum non-slip performance
- Cleans off the worst dirt before it can get inside
- Helps protect an inviting interior design street-side
- Suitable for the heaviest commercial use
- Ideal for outside and inside entrance



open structure closed structure

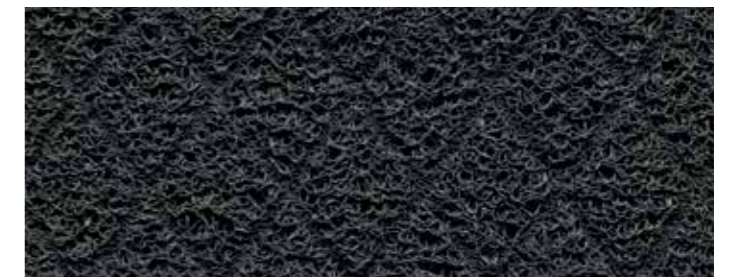


6940 | MD



6920 | MD | stone

LRV 7%

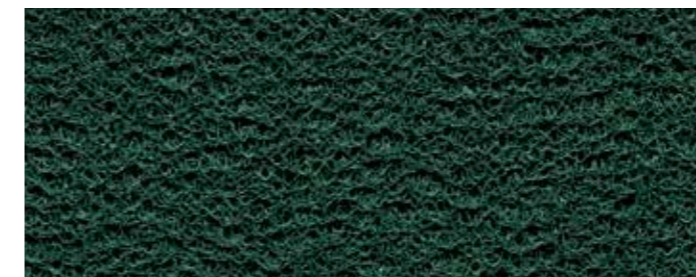


6140 | HD



6120 | HD | stone

LRV 6%

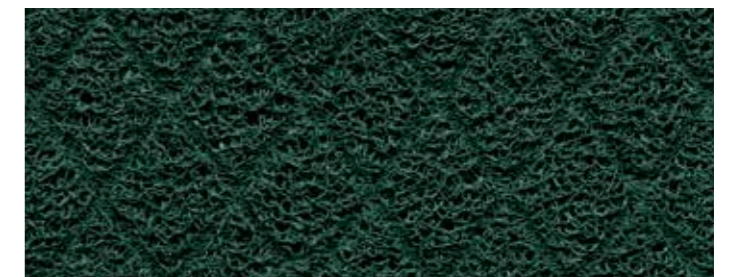


6948 | MD



6928 | MD | grass

LRV 6%

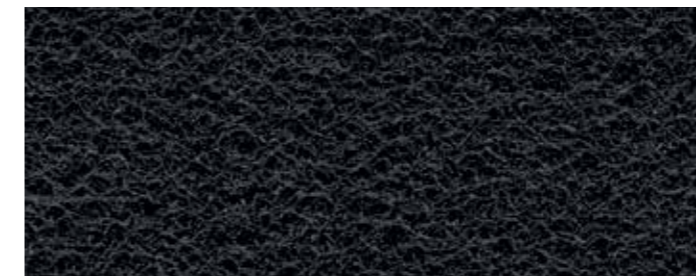


6148 | HD



6128 | HD | grass

LRV 5%



6950 | MD



6930 | MD | ink

LRV 2%



6150 | HD



6130 | HD | ink

LRV 2%



6943 | MD



6923 | MD | wine

LRV 5%



6143 | HD



6123 | HD | wine

LRV 5%

Great looks for a great *welcome*

coral® logo

Forbo has the capability to offer a bespoke print or cut-out design service that can be tailored to your precise design specification, offering individuality and a unique point of difference. Our Coral Logo collection offers a wide range of bright attractive colours. Depending on the colours and design of your corporate identity, you can choose between a printed mat or one with a cut inset logo. The Coral Logo collection is designed to the same standards as all other Coral products, which means it will retain its looks whilst keeping out dirt and moisture for years to come.

Printed logo mat

- Excellent visual quality and bright, attractive colours
- Perfect for complicated designs featuring multiple colours
- Choose from any of the colours shown plus Pantone and RAL colour matching
- Stays flat on the floor, causing less trips, due to heavy vinyl backing
- Long lasting and high resistance to sun light
- Excellent performance in removing dirt from your shoes
- Produced with phthalate free technology

Cut inset logo mat

- Ideal for extreme traffic conditions and maximum functional performance
- Choose from any colour from the standard Forbo Coral collection for the background and logo colours
- Excellent performance due to use of Coral quality products
- Easy to combine as inlay in larger Coral installations
- Produced with phthalate free technology



Other entrance flooring

coral® tiles

Coral tiles provide the flexibility that comes with 50 x 50 cm tile formats. Using Coral tiles can reduce cut off waste and also allows for quicker installation. This is particularly relevant when downtime or if a retail store opening times are at stake. In addition the increased flexibility of fitting a modular format also allows easier storage and handling.

Coral tiles are available in all colours from the Coral Classic, Bright and Brush collection. The colours of both collections can be mixed for a very functional, though very attractive entrance at the same time. Coral tiles offer the same product features as the Coral Classic, Bright and Brush sheet range. The tiles can be laid broadloom or tessellated.



coral® click (Fast Flooring installation)

Coral Click is an exceptionally versatile modular entrance matting system that can be assembled on site. The interlocking mechanism is simply 'clicked' together using a steel hammer. The tiles are supplied in 24 x 24 cm connectable tiles formats. Each box contains 24 tiles, sufficient to cover an area of 1,37m².

Five of the most popular Coral Brush colors are offered as standard inserts. In addition, a plain PVC tile (7828/7838) is offered which can be used as perimeter fill in matwells, or as the initial matting, where it will remove coarse dirt from the soles of shoes.

- Off the shelf modular matting system
- Exceptionally easy to fit, handle and store
- Available in 12mm & 17mm depths
- Closed structure to prevent heel trap
- Coral Brush insert is 100% ECONYL® regenerated yarn
- Co-ordinates perfectly with Coral Brush sheet & tile collections
- Wide variety of laying methods for improved aesthetics



Nuway®

Forbo Flooring Systems also manufactures Nuway engineered rigid entrance flooring systems. The Nuway collection offers a wide range of rigid made-to-size entrance floors which provide a hard wearing, outstanding first line of defense against soil and moisture. With offering Coral textile inserts, Nuway allows the rigid mat element of the entrance flooring system to be colour matched with the textile clean off area, providing an effective, integrated entrance system solution.

For more detailed information on our Nuway entrance systems, please visit www.forbo-flooring.com/nuway



Pro-Fit Quattro (Fast Flooring installation)

For our Coral tiles we have developed a special installation method that helps you to secure the tiles. Hook and loop patches are being laid on the corners holding the tiles together. This way the installation of the tiles can be done loose laid and goes even quicker. There are two colours of Brush and two colours of Classic which are on stock with the Pro-Fit Quattro backing. Other colours are on request.

Coral technical specifications

		Coral Classic	Coral Brush	Coral Duo	Coral Welcome
Area of use		commercial heavy	commercial heavy	commercial heavy	commercial heavy
Colours		12	14	6	8
Design		multi coloured	plain coloured	ribbed	multi-coloured linear
Total thickness	ISO 1765	approx. 9 mm, Fast Flooring approx. 10 mm	approx. 9 mm, Fast Flooring approx. 10 mm	approx. 9 mm	approx. 9 mm
Available widths rolls with 2.5 cm edge each side		105 cm, 155 cm, 205 cm	105 cm, 155 cm, 205 cm	205 cm	205 cm
Available length rolls		27.5 meter	27.5 meter	27.5 meter	27.5 meter
Available in tiles		50x50 cm / 12 per box / 3 m ²	50x50 cm / 12 per box / 3 m ²		
Available in Fast Flooring tiles		50x50 cm / 12 per box / 3 m ²	50x50 cm / 12 per box / 3 m ²		
Available sizes mats with 2.5 cm edge each side		55x90 cm, 90x155 cm, 135x205 cm, 205x300 cm	55x90 cm, 90x155 cm, 135x205 cm, 205x300 cm		105x155 cm
Sound absorption	ISO 354	$\alpha_w = 0.25$ (H) Fast Flooring Tiles	$\alpha_w = 0.25$ (H) Fast Flooring Tiles		
Reduction impact noise	ISO 10140-3	ΔL_w 29 dB (Fast Flooring tiles)	ΔL_w 29 dB (Fast Flooring tiles)		
Colour fastness to light	EN ISO 105/B02	7-8	≥ 5	≥ 5	7
Colour fastness ratings					
Rubbing	EN ISO 105/X12	4-5	5	4-5	5
Water	EN ISO 105/E01	4-5	4-5	4-5	4-5
Seawater	EN ISO 105/E02	4-5	4-5	5	4-5
Waterstains	EN 1307 annex G	4-5	5	5	5
Shampoo	BS 1006	4-5	4-5	4-5	4-5
Organic solvents	EN ISO 105/X05	4-5	4-5	4-5	4-5
Manufacturing method		tufted 5/32"cut pile	tufted 5/32"cut pile	tufted 5/32"cut pile	tufted 5/32"cut pile
Pile material		solution dyed polyamide	regenerated ECONYL® polyamide	regenerated ECONYL® polyamide solution dyed polyamide	regenerated ECONYL® polyamide
Tuft base		non-woven	non-woven	non-woven	100% recycled non-woven
Backing phthalate free vinyl		EVERFORT vinyl	EVERFORT vinyl	EVERFORT vinyl	EVERFORT vinyl
Total weight	ISO 8543	approx. 4000 g/m ²	approx. 4050 g/m ²	approx. 3800 g/m ²	approx. 3950 g/m ²
Total weight tiles	ISO 8543	approx. 4100 g/m ² (Fast Flooring approx. 5000 g/m ²)	approx. 4100 g/m ² (Fast Flooring approx. 5000 g/m ²)		
Pile installation weight	ISO 8543	approx. 870 g/m ²	approx. 920 g/m ²	approx. 670 g/m ²	approx. 750 g/m ²
Pile thickness	ISO 1766	approx. 7 mm	approx. 7 mm	approx. 6 mm	approx. 6.3 mm
Pile density	ISO 8543	0.100 g/cm ³	0.105 g/cm ³	0.095 g/cm ³	0.111 g/cm ³
Number of tufts	ISO 1763	approx. 61,500/m ²	approx. 58,000/m ²	approx. 32,000/m ²	approx. 79,300/m ²

All Coral products meet the requirements set by EN 14041: 2004, excluding loose-laid mats and rugs

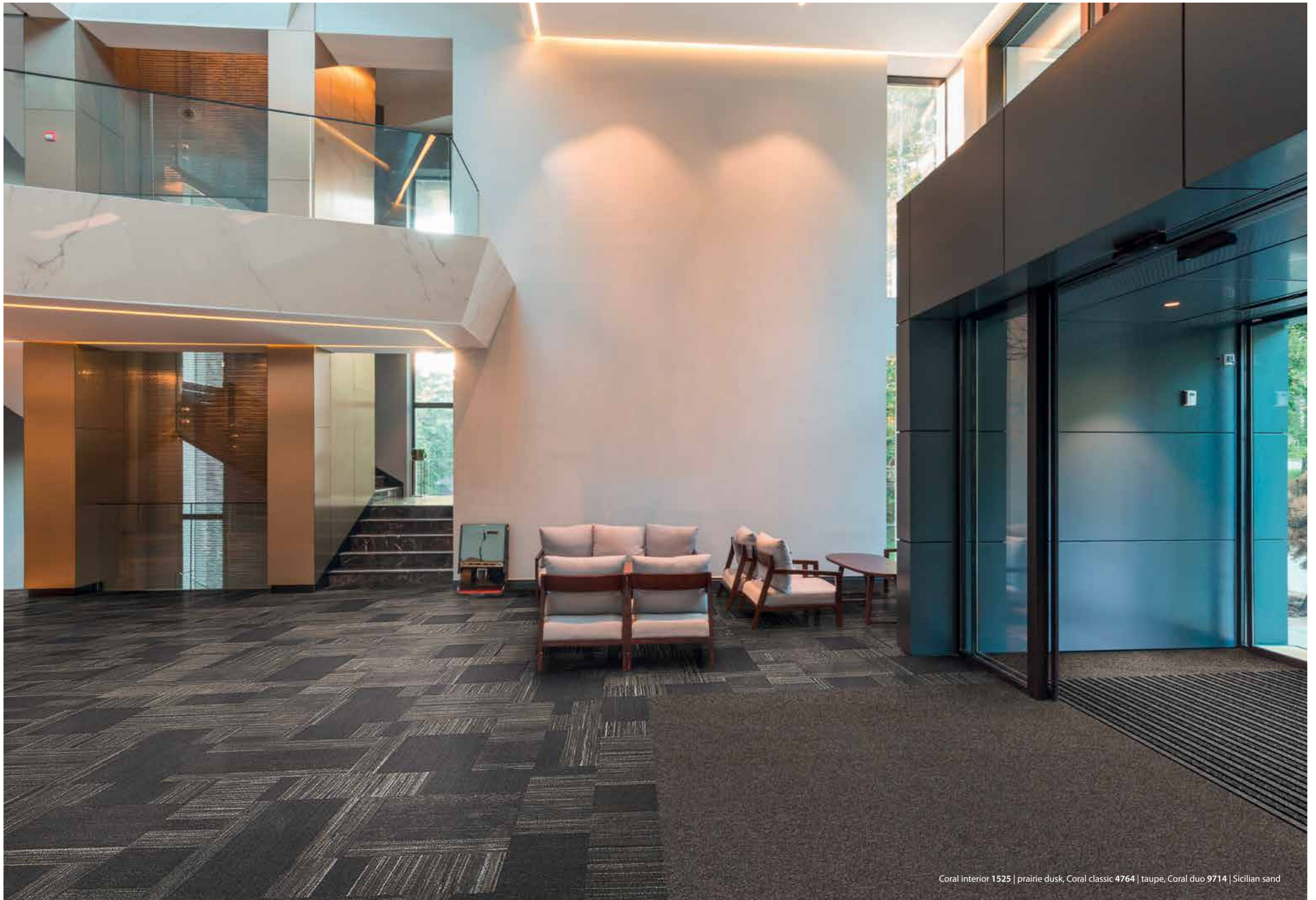
		1300147-DoP-004 1300150-DoP-107 (tiles)	1300147-DoP-004 1300150-DoP-107 (tiles)	1300147-DoP-004	1300147-DoP-004
DoP					
Reaction to fire	EN 13501-1	B _s -s1, G, NCS	B _s -s1, G, NCS	B _s -s1, G, NCS	B _s -s1, G, NCS
Slip resistance	EN 13893	$\mu > 0.30$	$\mu > 0.30$	$\mu > 0.30$	$\mu > 0.30$
Body voltage	ISO 6356	≤ 2 kV	≤ 2 kV	≤ 2 kV	≤ 2 kV

	Coral Luxe	Coral Interior	Coral Bright	Coral Grip HD	Coral Grip MD
Area of use	commercial light	commercial heavy	commercial medium	commercial heavy	commercial heavy
Colours	6	8	6	4	4
Design	plain coloured	random pattern of linear and plain coloured	plain coloured	3-dimensional interconnected monofilaments	3-dimensional interconnected monofilaments
Total thickness	approx. 8.5 mm	approx. 10 mm	approx. 8.5 mm	open structure approx. 16 mm, with backing approx. 17 mm	open structure approx. 11 mm, with backing approx. 12 mm
Available widths rolls with 2.5 cm edge each side	105 cm, 205 cm		90 cm, 130 cm, 200 cm	122 cm (open), 127 cm (backed)	122 cm (open), 127 cm (backed)
Available length rolls	20 meter		27.5 meter	approx. 10 meter	approx. 15 meter
Available in tiles		50x50 cm & 100x25 cm / 6+6 per box / 3 m ²	50x50 cm / 12 per box / 3 m ²		
Available in Fast Flooring tiles					
Available sizes mats with 2.5 cm edge each side	105x155 cm, 135x205 cm		60x90 cm, 90x150 cm	60x90 cm (open)	60x90 cm (open)
Sound absorption		$\alpha_w = 0.20$ (H)			
Reduction impact noise		ΔL_w 28 dB			
Colour fastness to light	8	≥ 5	7	7	7-8
Colour fastness ratings					
Rubbing	4-5	4-5	4-5	4-5	4-5
Water	4-5	5	4-5	5	5
Seawater	4-5	4-5	4-5	5	5
Waterstains	5	5	5	5	5
Shampoo	4	4-5	4-5	5	5
Organic solvents		4-5	4-5	4-5	4-5
Manufacturing method	tufted 5/32"cut pile	tufted 5/32"cut pile	tufted 5/32"cut pile	non woven scraping mat with embossing	non woven scraping mat
Pile material	solution dyed polyamide	regenerated ECONYL® polyamide solution dyed polyamide	Solution dyed regenerated ECONYL® polyamide	solution dyed vinyl with anti-slip granulate particles	solution dyed vinyl with anti-slip granulate particles
Tuft base	non-woven	non-woven	non-woven		
Backing phthalate free vinyl	EVERFORT vinyl	EVERFORT vinyl	EVERFORT vinyl	open structure or with EVERFORT vinyl backing	open structure or with EVERFORT vinyl backing
Total weight	approx. 4100 g/m ²		approx. 4200 g/m ²	approx. 5500 g/m ² (open) approx. 8100 g/m ² (backed)	approx. 3500 g/m ² (open) approx. 6500 g/m ² (backed)
Total weight tiles		approx. 4150 g/m ²	approx. 4250 g/m ²		
Pile installation weight	approx. 1000 g/m ²	approx. 970 g/m ²	approx. 1070 g/m ²		
Pile thickness	approx. 5.5 mm	approx. 6 mm	approx. 5.8 mm		
Pile density	0.140 g/cm ³	0.100 g/cm ³	0.160 g/cm ³		
Number of tufts	approx. 93,000/m ²	approx. 58,000/m ²	approx. 112,900/m ²		

	1300147-DoP-004	1300150-DoP-107	1300147-DoP-004 1300150-DoP-107 (tiles)	1300118-DoP-004	1300118-DoP-004
DoP					
Reaction to fire	B _s -s1, G, NCS	B _s -s1, G, NCS	B _s -s1, G, NCS	B _s -s1, G, NCS (with backing)	B _s -s1, G, NCS (with backing)
Slip resistance	$\mu > 0.30$	$\mu > 0.30$	$\mu > 0.30$	$\mu > 0.30$	$\mu > 0.30$
Body voltage	≤ 2 kV	≤ 2 kV	≤ 2 kV	≤ 2 kV	≤ 2 kV

All Forbo Flooring Systems' sales organisations worldwide have a certified Quality Management System in accordance with ISO 9001. All Forbo Flooring Systems' manufacturing operations have a certified Environmental Management System in accordance with ISO 14001. The Life Cycle Assessment (LCA) of Forbo Flooring Systems' products is documented in individual Environmental Product Declarations (EPD's) which can be found on all of our websites.





Coral interior 1525 | prairie dusk, Coral classic 4764 | taupe, Coral duo 9714 | Sicilian sand

Forbo Flooring Systems is part of the Forbo Group, a global leader in flooring and movement systems, and offers a full range of flooring products for both commercial and residential markets. High quality linoleum, vinyl, textile, flocked and entrance flooring products combine functionality, colour and design, offering you total flooring solutions for any environment.



Forbo Flooring B.V.
P.O. Box 13
1560 AA Krommenie
The Netherlands
T: +31 75 647 74 77
question@forbo.com
www.forbo-flooring.com

236257/102021

Follow us on



creating better environments

forbo

FLOORING SYSTEMS